

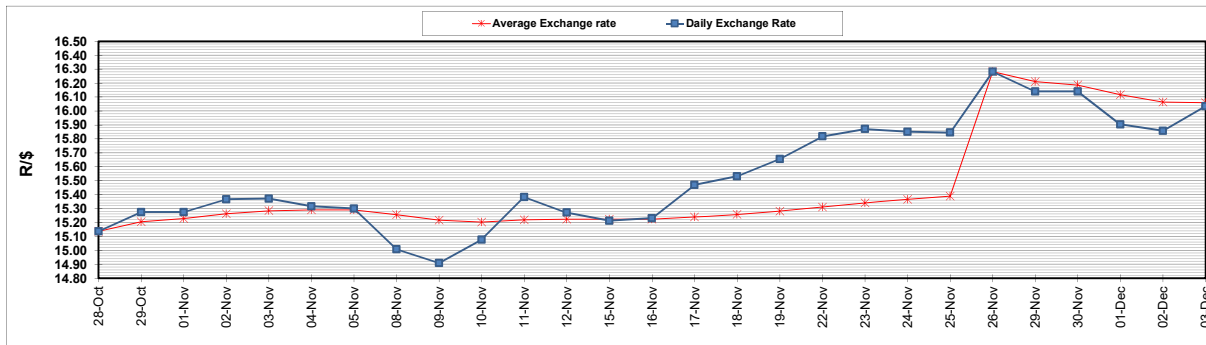
	PETROL 95 ULP	PETROL 93 ULP & LRP	DIESEL 0.05%	DIESEL 0.005%	ILL. PAR.
GAUTENG PUMP PRICE (SA c/l) AS FROM 01/12/2021	2,029.000	2,007.000	-	-	-
WHOLESALE PRICE (SA c/l) AS FROM 01/12/2021	-	-	1,792.480	1,797.880	1,167.688
SINGLE NATIONAL MAXIMUM RETAIL PRICE	-	-	-	-	1,489.000
BASIC FUEL PRICE - 03/12/2021 (SA c/l)	860.397	843.732	857.126	861.556	852.361
PRESS RELEASE CONTRIBUTION TO BFP 01/12/2021 - 03/12/2021 (SA c/l)	973.670	961.670	955.630	961.030	946.128
UNIT OVER/(UNDER) RECOVERY - 03/12/2021 (SA c/l)	113.273	117.938	98.504	99.474	93.767
AVERAGE BASIC FUEL PRICE 26/11/2021 - 03/12/2021	862.732	846.611	853.034	858.606	846.791
AVERAGE UNIT OVER/(UNDER) RECOVERY 26/11/2021 - 03/12/2021	92.658	96.778	83.596	82.425	82.337

ANALYSIS MOVEMENT OF AVERAGE OVER/(UNDER) RECOVERY

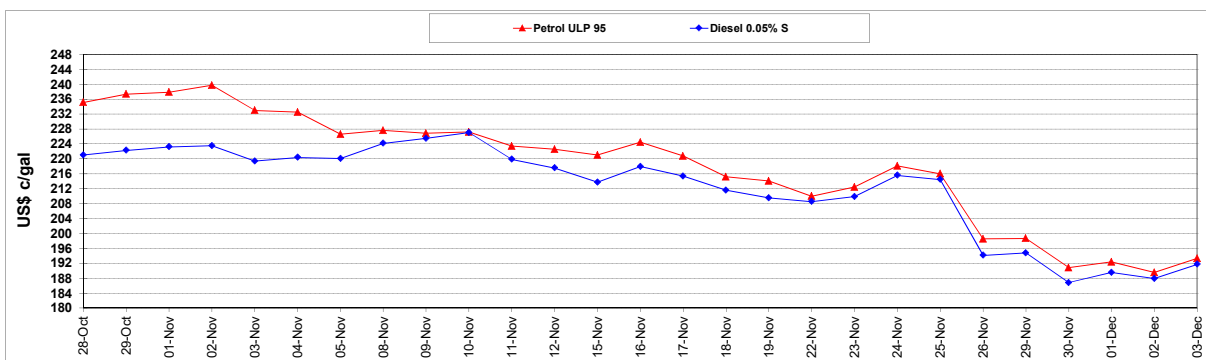
	PETROL 95	PETROL 93	DIESEL 0.05%	DIESEL 0.005%	ILL. PAR.
- MOVEMENT IN INTERNATIONAL PRODUCT PRICES	128.673	132.121	119.206	118.266	117.686
- MOVEMENT IN EXCHANGE RATE	(36.015)	(35.342)	(35.610)	(35.842)	(35.349)
AVERAGE UNIT OVER/(UNDER) RECOVERY 26/11/2021 - 03/12/2021	92.658	96.778	83.596	82.425	82.337

R/\$ EXCHANGE RATE - (R/\$16.0340 - 03/12/2021)

EXCHANGE RATE USED IN BASIC FUEL PRICE



INTERNATIONAL PRODUCT PRICES OF BASKET USED IN BASIC FUEL PRICE



BASIC FUEL PRICE IN SA CENTS PER LITRE

